

# THE LOBBY

CENTER CITY PHILADELPHIA  
1635 Market St, Philadelphia, PA 19103

1635 Market St Philadelphia, PA 19103





1635 Market St Philadelphia, PA 19103

CENTER  
CITY



## Center City Philadelphia

Our Workplace in Center City Philadelphia is located on the 13th - 16th floors of 1635 Market St. The neighborhood is filled with commerce, restaurants, and countless retail options. A scenic few blocks from the building is Rittenhouse Square as well as revered City Hall, the area has everything from historical landmarks to an adventurous nightlife.

- Grand lobby entrance, with 24 hr security
- Reception & secure delivery
- Video ready meeting and conference rooms
- Soundproof recording studio
- Secure bike storage and lockers
- Three block walk to Rittenhouse Square and City Hall

THE LOBBY  
COWORKING



1635 Market St Philadelphia, PA 19103








CENTER  
CITY



## Amenities:

At THE LOBBY, your workday is sure to be an excellent one and it starts as soon as you walk in through the door, with its chic and sophisticated décor. This location puts you in the middle of all the city has to offer with walking distance to so many options, you can easily explore the various types of culture, art, and local happenings.

### Office Membership Amenities:

-  Dual fiber secure, high speed Wi-Fi and ethernet
-  Video-ready meeting areas and conference rooms
-  Secure IT server infrastructure, private rack space available
-  Flexible term options from Month-to-Month to 3-year agreements
-  Shared kitchen area with pantry, and assorted complimentary beverages
-  All-inclusive membership rates include taxes, fees and utilities
-  Wellness Rooms

### CG+ APP

- Subscribe to a membership plan
- Manage your billing and invoicing
- Make edits to your membership
- Book a conference room
- Message your team
- Explore all CommonGrounds locations
- Register for an upcoming event, speaker or education

### COMMUNITY

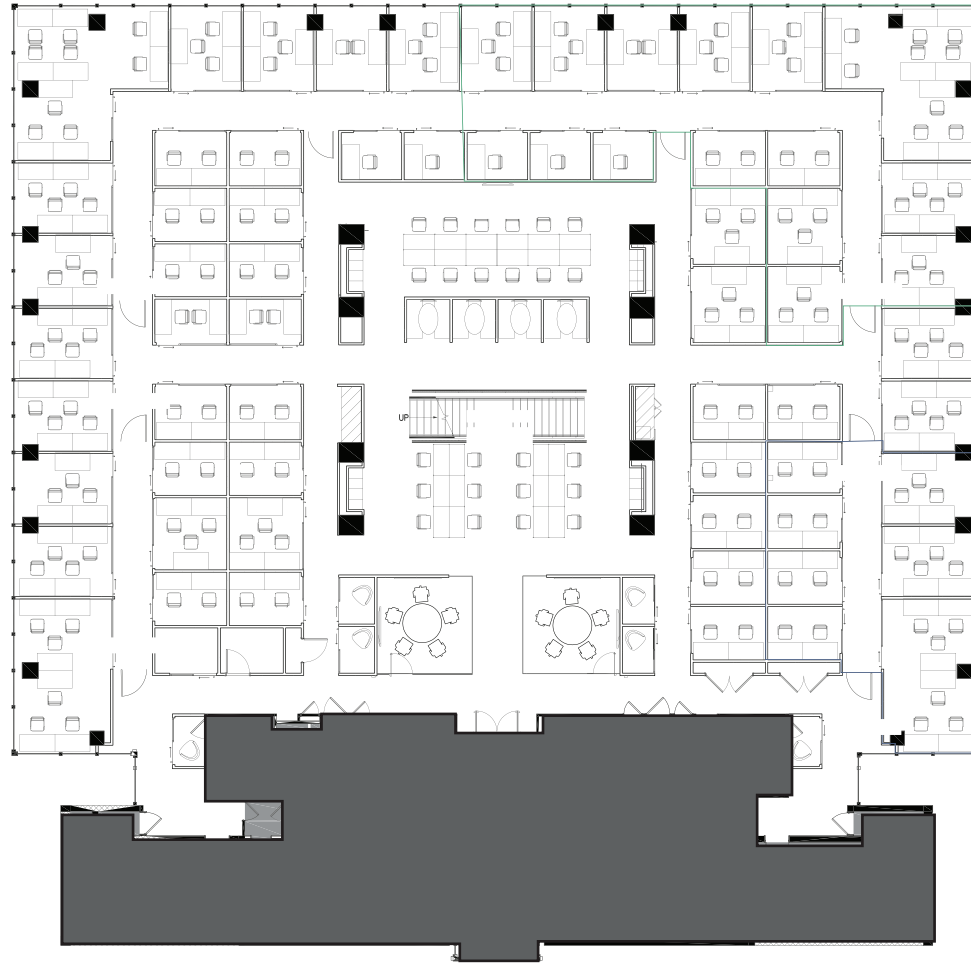
- Broad network of CommonGrounds members locally and nationwide
- Events, speakers, learning opportunities and networking



1635 Market St Philadelphia, PA 19103

CENTER  
CITY

## Floor 14



- Private desks (62)
- Private phone booths (2)
- Conference rooms (2)

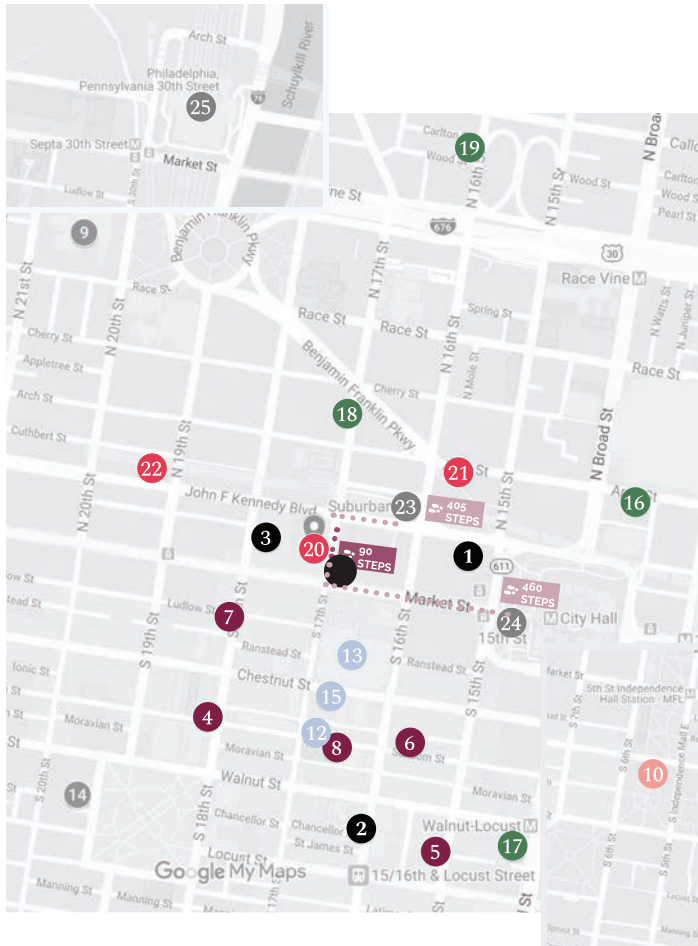
THE LOBBY  
COWORKING



1635 Market St Philadelphia, PA 19103

CENTER  
CITY

- Nearby SEPTA, PATCO, and Amtrak train stations
- Located in proximity to I-676 & I-76
- Onsite parking



#### Office Support:

- 1. US Post Office**  
1500 John F Kennedy Blvd,  
Ste C31, Philadelphia, PA  
19102  
(800) 275-8777
- 2. FedEx Office & Print Center**  
216 S 16th St,  
Philadelphia, PA 19102  
(215) 732-2033
- 3. UPS**  
1735 Market Street, Suite A,  
Philadelphia, PA 19103  
(215) 567-6006

#### Restaurants:

- 4. The Dandelion**  
*British-themed gastropub*  
124 S 18th St,  
Philadelphia, PA 19103  
(215) 558-2500
- 5. Butcher & Singer**  
*Old Hollywood style  
chophouse*  
1500 Walnut St,  
Philadelphia, PA 19102  
(215) 732-4444
- 6. Harp & Crown**  
*New American eats and  
downstairs bowling alley*  
1525 Sansom St,  
Philadelphia, PA 19102  
(215) 330-2800
- 7. Nom Nom Ramen**  
20 S 18th Street,  
Philadelphia, PA 19103

- 8. Federal Donuts**  
*Korean style fried chicken  
& creative donuts*  
1632 Sansom St,  
Philadelphia, PA 19103  
(215) 665-1101

#### Local Attractions:

- 9. The Franklin Institute**  
*Family friendly science  
museum with several  
interactive exhibits and a  
planetarium*  
222 N 20th St,  
Philadelphia, PA 19103  
(215) 448-1200

- 10. Independence Hall**  
*Location of the Declaration of  
Independence & the U.S.  
Constitution signings.*  
520 Chestnut St,  
Philadelphia, PA 19106  
(215) 965-2305

- 11. Fairmount Park**  
*Historic, big park with walking  
trails, sports fields, gardens,  
public art*  
Reservoir Dr, Philadelphia, PA  
19119(215) 972-8080

#### Hotels:

- 12. Kimpton Hotel Palomar  
Philadelphia**  
117 S 17th St,  
Philadelphia, PA 19103  
(215) 563-5006
- 13. The Westin Philadelphia  
At Liberty Place,**  
99 S 17th St,  
Philadelphia, PA 19103  
(215) 563-1600
- 14. The Rittenhouse Hotel**  
210 W Rittenhouse Square,  
Philadelphia, PA 19103  
(215) 546-9000
- 15. Club Quarters Hotel,  
Philadelphia**  
1628 Chestnut St,  
Philadelphia, PA 19103  
(215) 282-5000

#### Car Rental:

- 16. Avis Car Rental**  
1324 Arch St,  
Philadelphia, PA 19107  
(215) 751-2737
- 17. Budget Car Rental**  
200 S Broad Street & Walnut  
Street, Philadelphia, PA 19102  
(215) 732-1950
- 18. Hertz Rent A Car**  
1700 Benjamin Franklin Pkwy,  
Philadelphia, PA 19103  
(215) 563-2760
- 19. Premier Luxury Rentals**  
314 N 16th St,  
Philadelphia, PA 19103  
(215) 636-0636

#### Parking:

- 20. Parkway 1700 Market**  
1700 Market St,  
Philadelphia, PA 19103  
(267) 606-4050
- 21. Love Park Garage**  
1501 John F Kennedy Blvd,  
Philadelphia, PA 19102  
(312) 935-2800
- 22. SP+ Parking**  
1901 John F Kennedy Blvd,  
Philadelphia, PA 19103(215)  
568-4018

#### Public Transit:

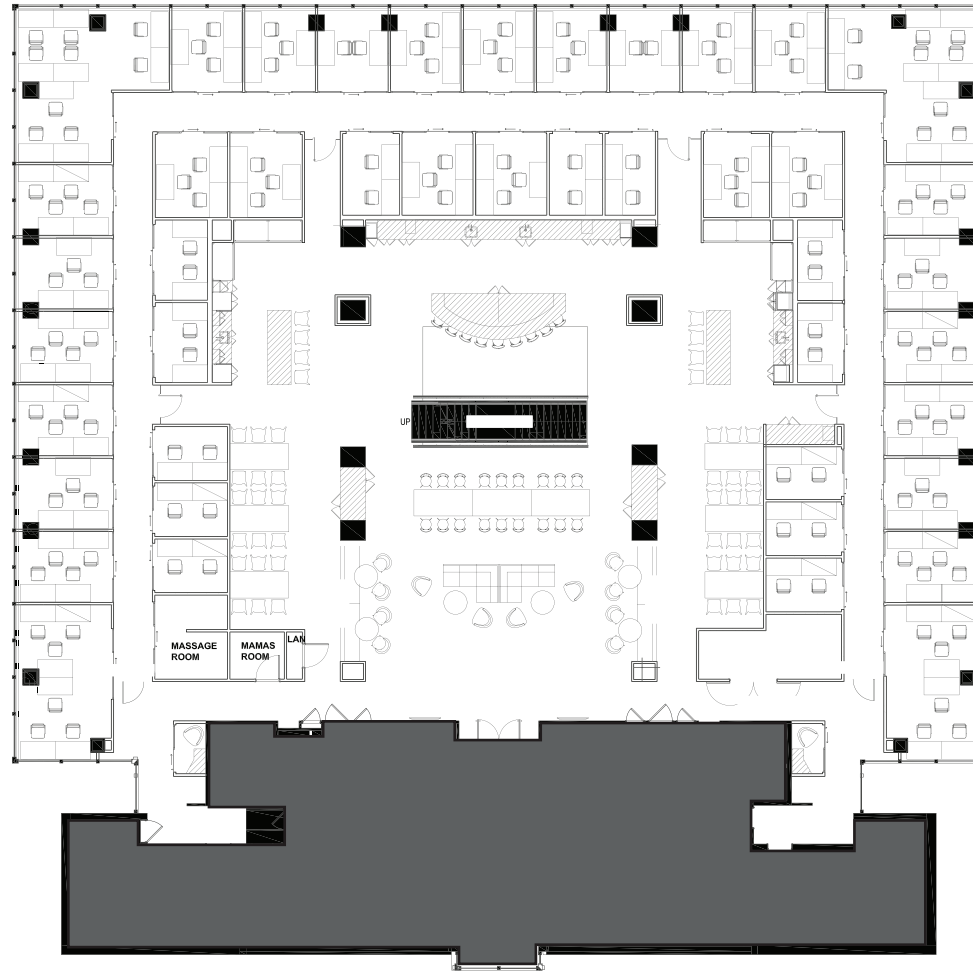
- 23. SEPTA Commuter –  
Suburban Station**  
16th St. & JFK Blvd.,  
Philadelphia, PA 19102  
(215) 580-7800
- 24. SEPTA MFL – 15th St  
Station** 15th Street & Market St  
Philadelphia, PA 19102
- 25. Amtrak – 30th St  
Station** 2955 Market St,  
Philadelphia, PA 19104  
(800) 872-7245



1635 Market St Philadelphia, PA 19103

CENTER  
CITY

## Floor 15



- Private desks (44)
- Private phone booths (2)
- Relaxation room (1)
- Wellness Room (1)

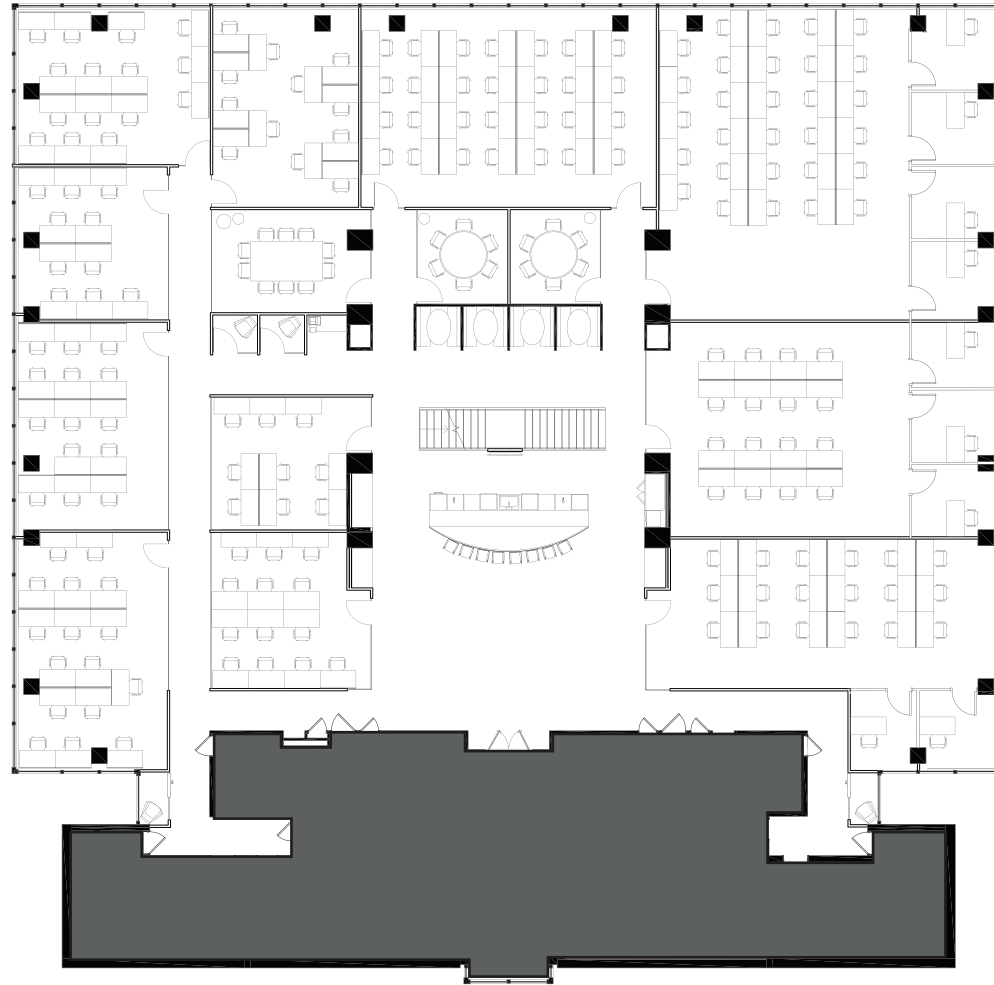
THE LOBBY  
COWORKING



1635 Market St Philadelphia, PA 19103

CENTER  
CITY

## Floor 13



- Private desks (9)
- Private phone booths (4)
- Conference rooms (3)

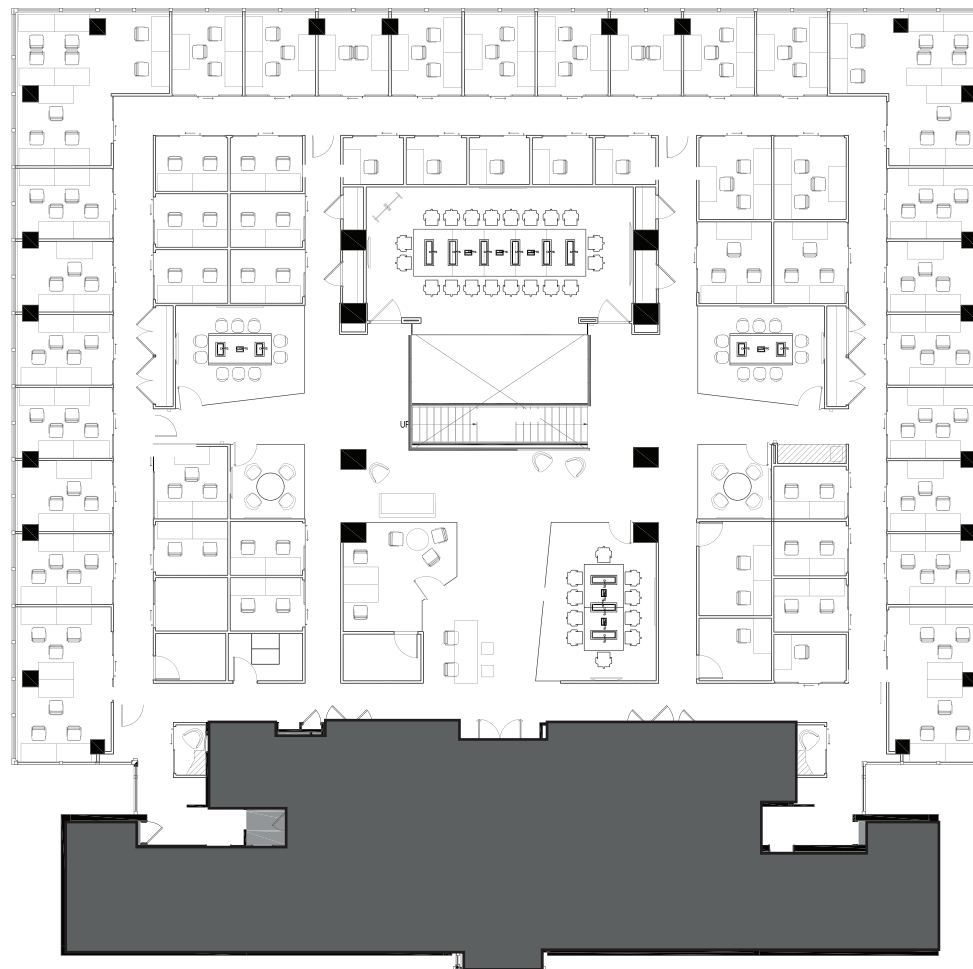
**THE LOBBY**  
COWORKING



1635 Market St Philadelphia, PA 19103

CENTER  
CITY

## Floor 16



- Private desks (51)
- Private phone booths (2)
- Conference rooms (6)

THE LOBBY  
COWORKING