



1635 MARKET STREET

# MARKET STREET CONNECTED

## FOR INFORMATION, CONTACT:

**Kevin Maloney**  
Senior Vice President  
T +1 215 561 8947  
[kevin.maloney@cbre.com](mailto:kevin.maloney@cbre.com)  
Licensed: PA

**Mark Adzick**  
Vice President  
T +1 215 561 8956  
[mark.adzick@cbre.com](mailto:mark.adzick@cbre.com)  
Licensed: PA

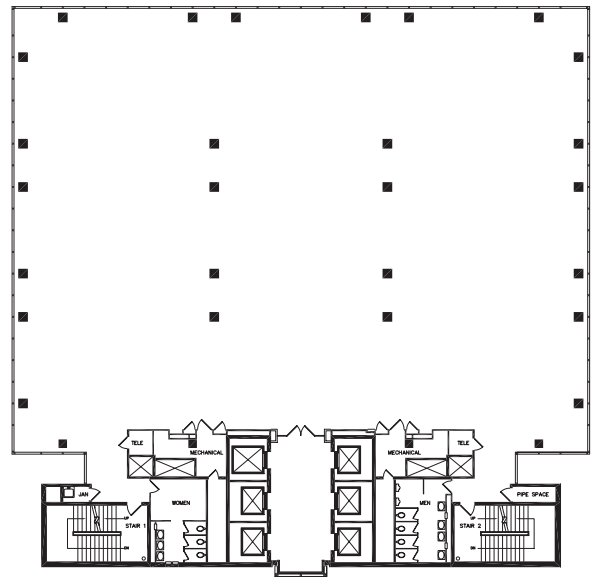
**CBRE Inc.**  
Two Liberty Place  
50 South 16th St., Suite 3000  
Philadelphia, PA 19102  
+1 215 561 8900  
Licensed Real Estate Broker



NIGHTINGALE  
PROPERTIES

CBRE





» Efficient Floor Plates  
» 14,330 SF/Floor  
» Maximum Perimeter Window Line





**Newly renovated  
building entrance,  
lobby, elevators  
and common  
area restrooms**

### **Suite Features**

- 296,000 SF Class A office
- 24/7 building access and security
- Responsive, on-site management
- On-site banking, restaurant, and daycare facility
- Proximity to local shopping, restaurants, hotels and parking
- Direct access to public transportation concourse





# Prime Location at 17th and Market Streets



## FOR INFORMATION, CONTACT:

### Kevin Maloney

Senior Vice President  
T +1 215 561 8947  
kevin.maloney@cbre.com  
Licensed: PA

### Mark Adzick

Vice President  
T +1 215 561 8956  
mark.adzick@cbre.com  
Licensed: PA

### CBRE Inc.

Two Liberty Place  
50 South 16th St., Suite 3000  
Philadelphia, PA 19102  
+1 215 561 8900  
Licensed Real Estate Broker

**CBRE**

  
**NIGHTINGALE**  
— PROPERTIES —